



Installation
and activation
process

(1) Register

- Use the following link
<http://update.easterngraphics.com/registration/SEIT50>
- Fill all the fields
 - Registrations with false or incomplete information will be denied
 - Independent professionals should insert in the field **Company** their professional title

pCon UPDATE | **EasternGraphics**
visualize your business

LOG IN REGISTER MANUFACTURERS SUPPORT

Register on pCon.update

Please insert your personal information

► **Insert personal information**

- Confirm e-mail address
- Activation of user account
- Select manufacturers
- Download software

User name

Password At least 6 characters

Repeat password

Company

Title Mr.

First name

Last name

Street address

Zip code

City

Country Italy

E-mail address

Phone number

Language English

Profession ☐ Manufacturer ☐ Distributor

(2) Confirm identity

- After the registration you'll receive an email to confirm your identity
- With a **click on the activation link** you'll send a request to activate the account



Dear Mr. Easterngraphics

Thank you for your registration on pCon.update.

To continue with your registration, please confirm your e-mail address.



Confirm e-mail address

This confirmation process is necessary to make sure that the e-mail you entered is correct. If you have not activated this service, please ignore this e-mail.

(3) Account approval

- You'll **receive another email** when your account has been approved. It's possible that the activation process is not immediate.
- From this moment on you'll have access to the pCon.update portal



Dear Mr. Easterngraphics

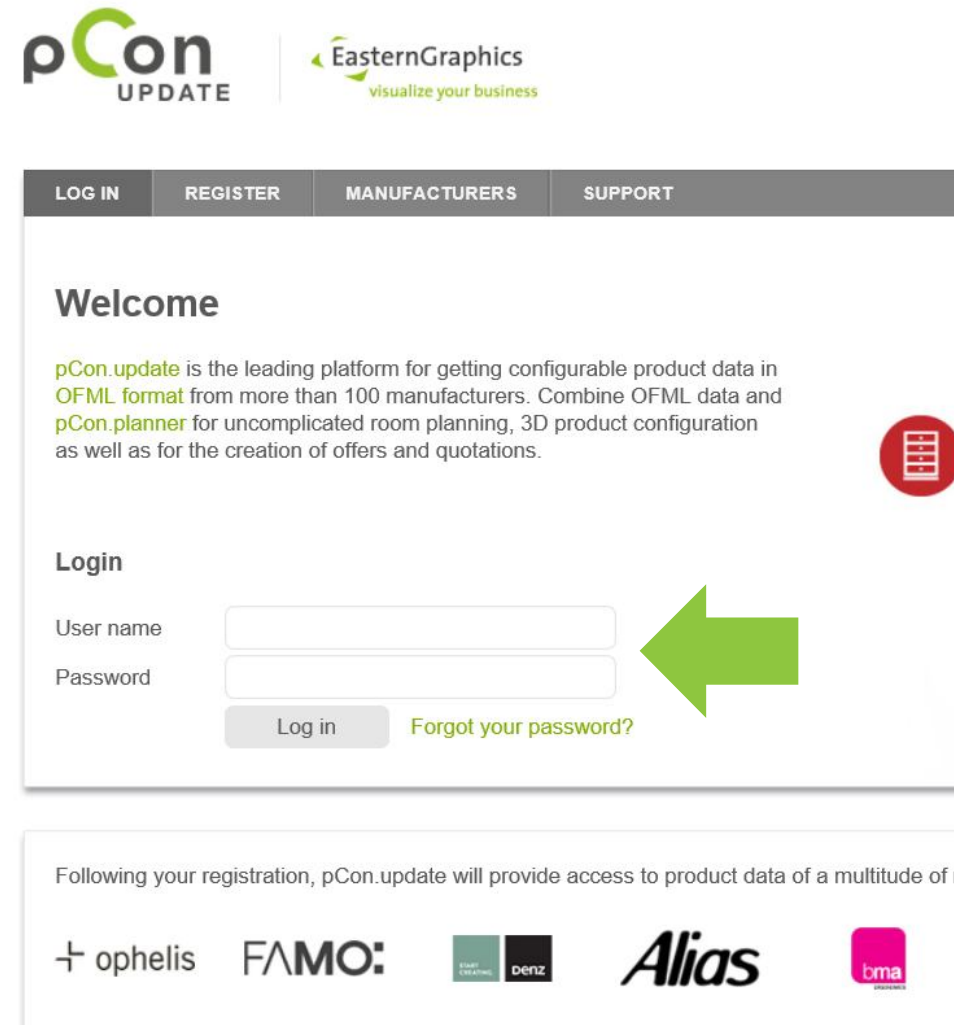
Your pCon.update account with the user name Easterngraphics Southern Europe has been activated.



Continue registration

(4) Access the pCon.update portal

- With the username and password created during the registration process you can access the portal update.easterngraphics.com
- In the **Profile** section you can change or update information regarding your account



pCon UPDATE | EasternGraphics
visualize your business

LOG IN REGISTER MANUFACTURERS SUPPORT

Welcome

pCon.update is the leading platform for getting configurable product data in OFML format from more than 100 manufacturers. Combine OFML data and pCon.planner for uncomplicated room planning, 3D product configuration as well as for the creation of offers and quotations.

Login

User name

Password

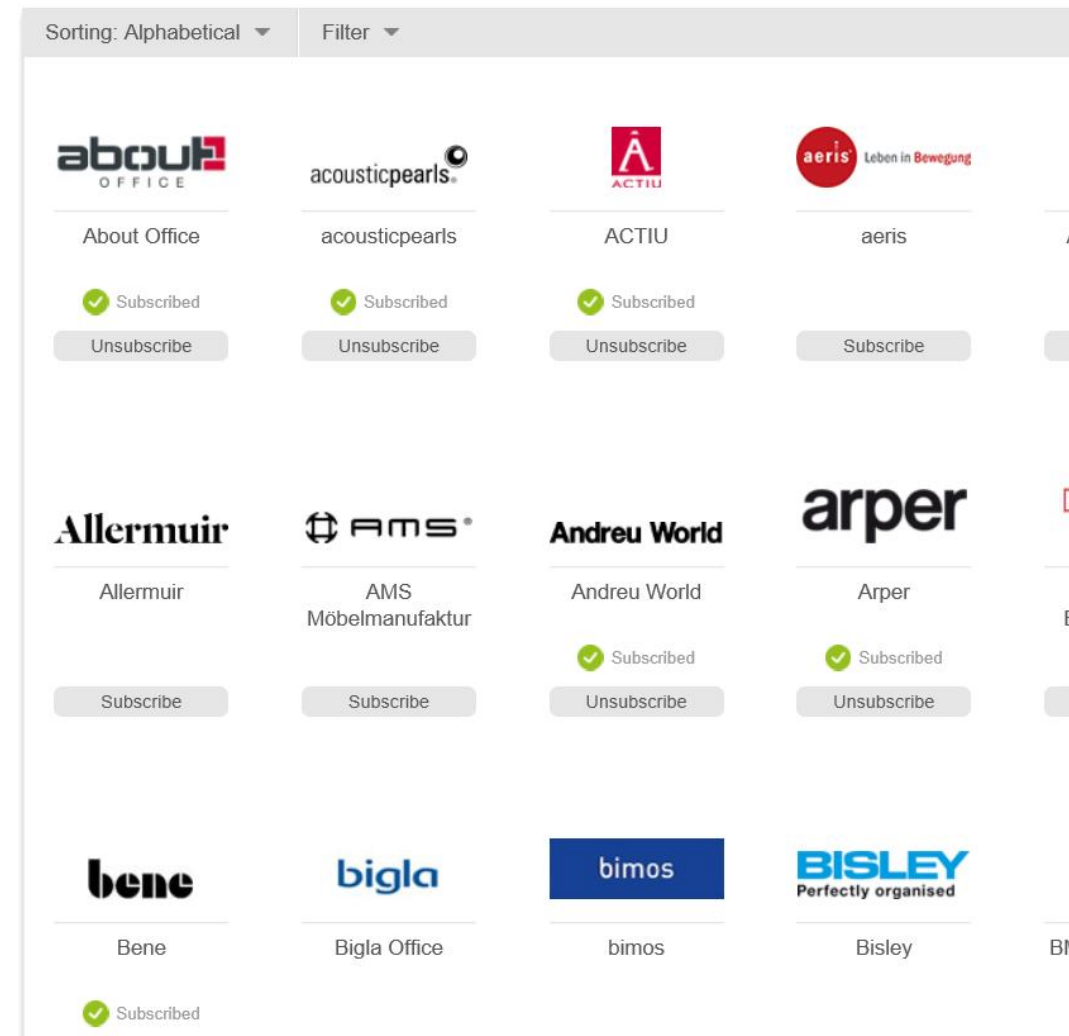
Log in [Forgot your password?](#)

Following your registration, pCon.update will provide access to product data of a multitude of

ophelis FAMO denz Alias bma

(5) Request data

- Select the manufacturers to which you wish to request configurable data by clicking on **Subscribe**
- Click on the manufacturer logo to get further information



NEW Request the high quality generic **kitchen** and **living** libraries with thousands of configurable products

(6) Data access notification

- You'll **receive an email** when the manufacturer has approved your access to their data
- The time necessary for the approval of the data depends on each manufacturer



Dear Mr. Easterngraphics

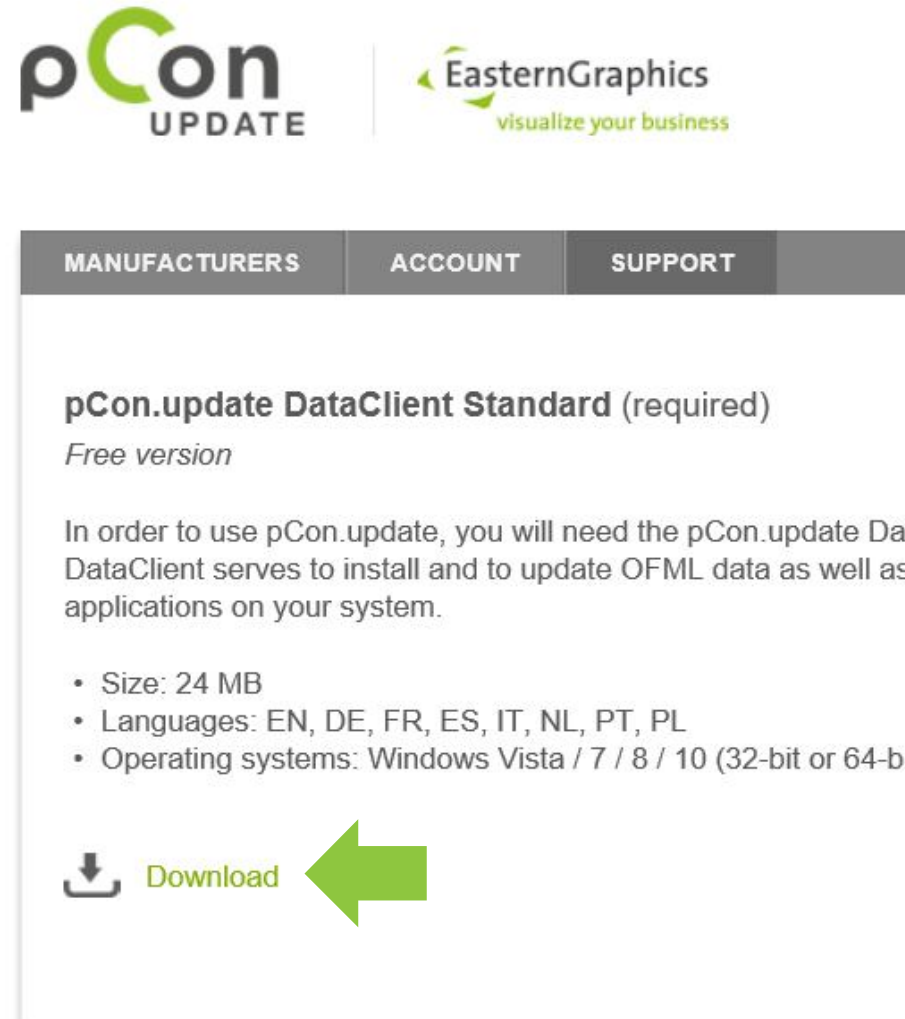


Your subscription to **EasternGraphics s.r.l.** has been activated.

You can now use the pCon.update DataClient to download the content provided by EasternGraphics s.r.l..

(7) Download and install DataClient

- It's necessary to install **pCon.update DataClient** to be able to download pCon.planner ME and the configurable data
- It will maintain your data and all pCon applications always up to date
- In the pCon.update portal, go to **Support** section and download pCon.update DataClient



The screenshot shows the pCon.update website interface. At the top, there are logos for 'pCon UPDATE' and 'EasternGraphics visualize your business'. Below the logos is a navigation bar with three tabs: 'MANUFACTURERS', 'ACCOUNT', and 'SUPPORT'. The 'SUPPORT' tab is selected. The main content area displays the title 'pCon.update DataClient Standard (required)' followed by 'Free version'. A paragraph explains that pCon.update requires the DataClient to install and update OFML data. Below this, a list of specifications is provided: Size: 24 MB, Languages: EN, DE, FR, ES, IT, NL, PT, PL, and Operating systems: Windows Vista / 7 / 8 / 10 (32-bit or 64-bit). At the bottom, there is a download button with a download icon and the text 'Download'. A large green arrow points to the 'Download' button.

pCon
UPDATE


EasternGraphics
visualize your business

MANUFACTURERS ACCOUNT **SUPPORT**

pCon.update DataClient Standard (required)
Free version

In order to use pCon.update, you will need the pCon.update DataClient serves to install and to update OFML data as well as applications on your system.

- Size: 24 MB
- Languages: EN, DE, FR, ES, IT, NL, PT, PL
- Operating systems: Windows Vista / 7 / 8 / 10 (32-bit or 64-bit)

 **Download**

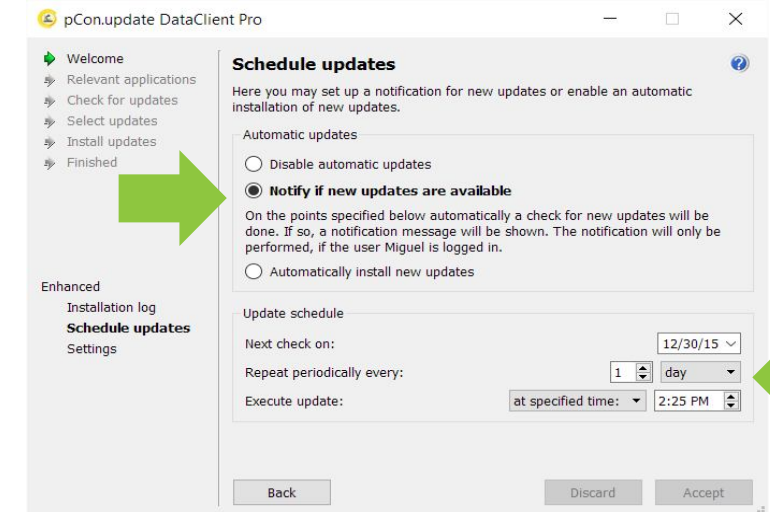
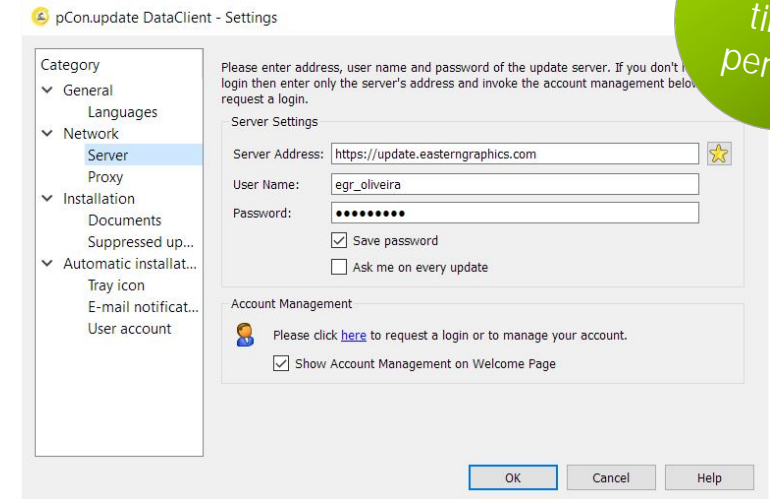
(8) DataClient initial setup

Access configuration

- Server address: <http://update.easterngraphics.com>
- User name: defined during registration
- Password: defined during registration
- Activate 'Save password'

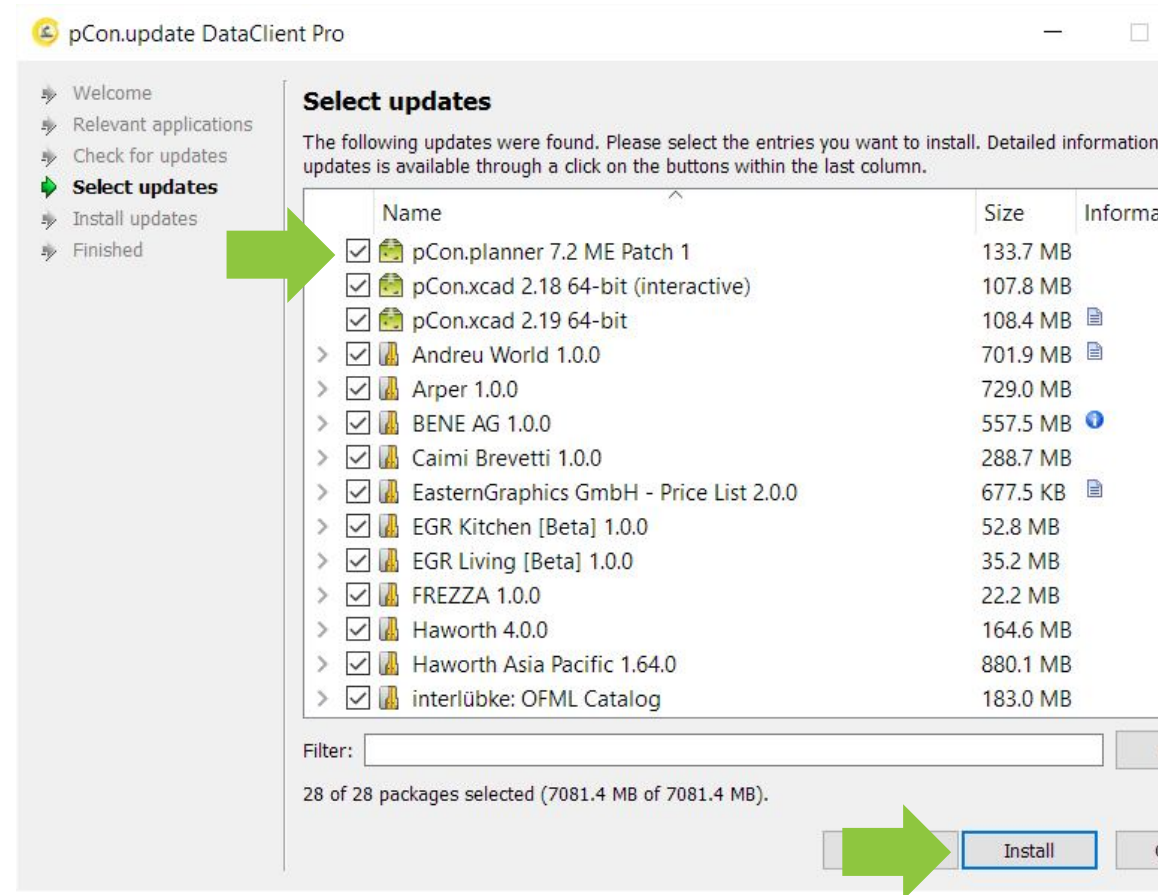
Schedule updates

- Select the option 'Notify if new updates are available' and set the 'Repeat periodically every' to 'day'
- When new updates are available an automatic notification will be visible



(9) Install pCon.planner ME

- It's necessary to have installed **pCon.planner ME** or **PRO** to process configurable data. The STD version available on our site is not compatible with this type of data
- pCon.planner ME will show up in the window of the available updates
- Click **Install**



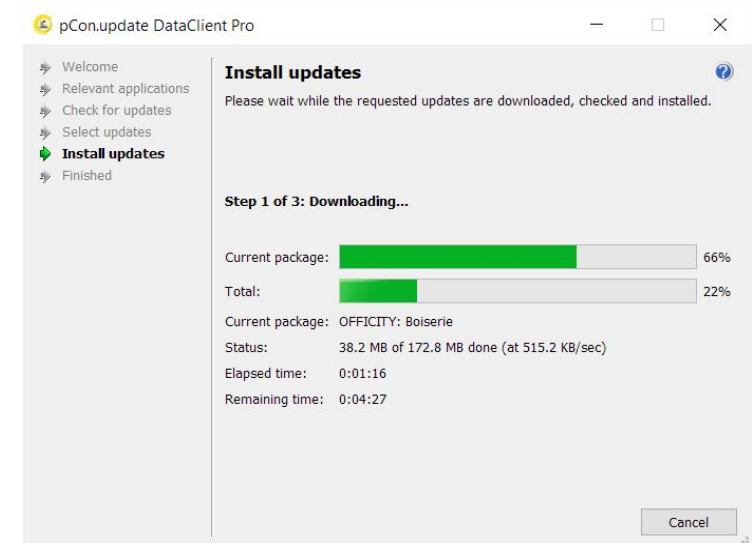
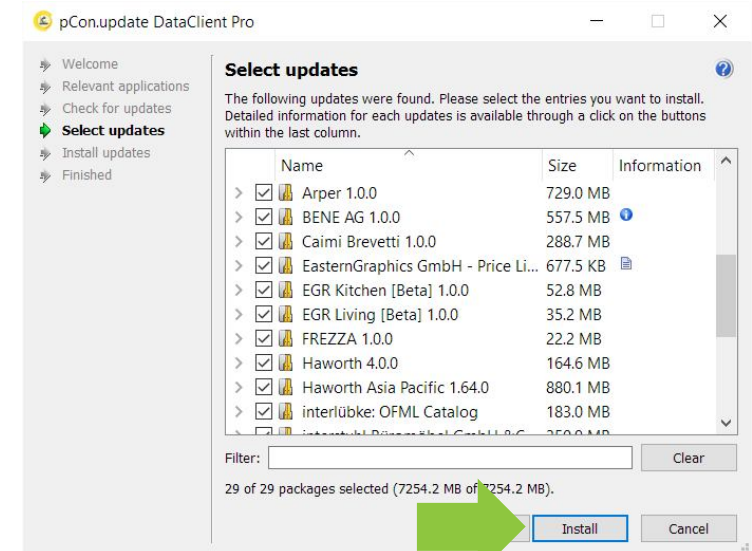
(10) Install/update data

Select updates

- We recommend that you always update all data and applications visible in the list

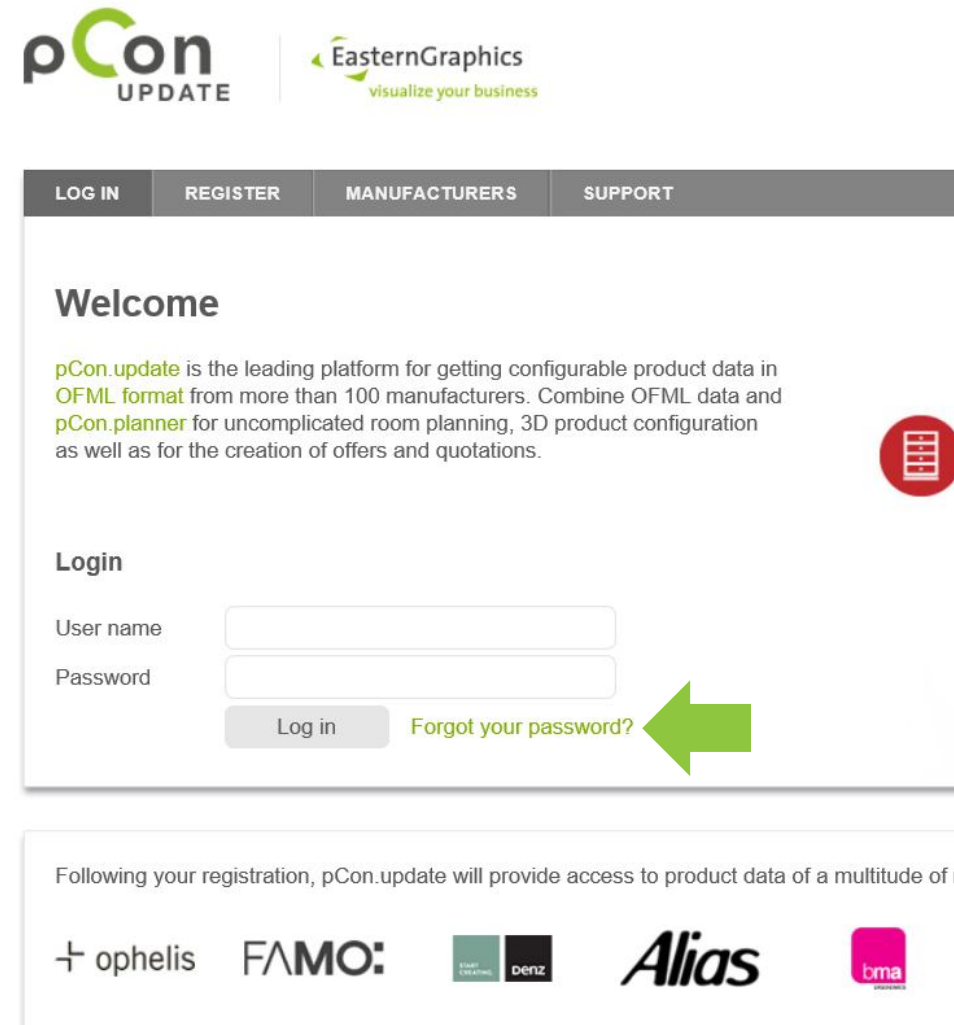
Install updates

- After selecting the modules to update, the data and applications will be downloaded and installed



(11) Forgot the password?

- If you forget your access password to pCon.update, you can easily recover it
- Go to the pCon.update portal and click on **Forgot your password?** link
- Insert the email address used for the registration and follow the simple steps



The screenshot displays the pCon.update website interface. At the top, the pCon UPDATE logo is on the left, and the EasternGraphics logo with the tagline 'visualize your business' is on the right. Below the logos is a navigation bar with four links: LOG IN, REGISTER, MANUFACTURERS, and SUPPORT. The main content area is titled 'Welcome' and contains a paragraph describing pCon.update as a platform for configurable product data in OFML format, combining OFML data with pCon.planner for room planning and 3D configuration. Below this is a 'Login' section with two input fields for 'User name' and 'Password'. A 'Log in' button is positioned below the password field. To the right of the button is a link labeled 'Forgot your password?' which is highlighted by a large green arrow. At the bottom of the page, a footer section states: 'Following your registration, pCon.update will provide access to product data of a multitude of' followed by logos for ophelis, FAMO, denz, Alias, and bma.

pCon
UPDATE

EasternGraphics
visualize your business

LOG IN REGISTER MANUFACTURERS SUPPORT

Welcome

pCon.update is the leading platform for getting configurable product data in OFML format from more than 100 manufacturers. Combine OFML data and pCon.planner for uncomplicated room planning, 3D product configuration as well as for the creation of offers and quotations.

Login

User name

Password

Log in [Forgot your password?](#)

Following your registration, pCon.update will provide access to product data of a multitude of

ophelis FAMO denz Alias bma